



PRODUCT COLLECTION



WHERE STRUCTURE AND MOVEMENT MEET

Endicott delivers natural beauty that amplifies design and shapes visions. We offer face brick, thin brick, pavers and tile that bring ideas to life. With a wide range of colors, textures, sizes and shapes, Endicott delivers all of the elements necessary to fulfill design intent and enrich spaces.

TABLE OF CONTENTS

Face Brick Project.....	1-2
Face Brick Colors – Architectural Series	3-5
Face Brick Colors – Residential Series.....	6-7
Face Brick Colors – Jefferson Series	8
Face Brick Project.....	9-10
Face Brick Textures	11-13
Face Brick Sizes	14
Face Brick Project	15-16
Thin Brick Project.....	17-18
Thin Brick Project.....	19-20
Thin Brick Colors.....	21-24
Thin Brick – Jefferson Series	25
Thin Brick – Applications	26
Thin Brick – Textures	27-29
Thin Brick – Sizes.....	30
Thin Brick Project.....	31-32
Paver Project.....	33-34
Paver Colors.....	35-36
Paver Project.....	37-38
Paver Sizes	39
Paver Spacers	40
Paver Project.....	41-44
Mural Projects	45
Murals.....	45



FACE BRICK



BRUCE C. BOLLING MUNICIPAL BUILDING

Bruce C. Bolling Municipal Building

Color: Medium Ironspot #46

Texture: Smooth, Velour, Artisan

Size: Modular, Shapes

Location: Boston, MA



FACE BRICK ARCHITECTURAL SERIES

Adding richness to great design since 1920.



Golden Buff



Light Grey Blend



Grey Blend



Light Sandstone



Dark Sandstone



Buff Blend



Rose Blend



Red Blend



Burgundy Blend



Ruby Red



Red Ironspot



Desert Ironspot Light



Desert Ironspot Dark



Coppertone



Copper Canyon

— FACE BRICK ARCHITECTURAL SERIES CONTINUED —



Bordeaux Blend



Manganese Brown



Executive Ironspot



Sienna Ironspot



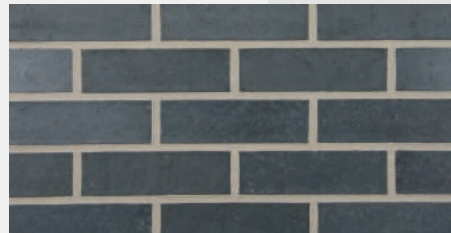
Medium Ironspot #77



Medium Ironspot #46



Dark Ironspot

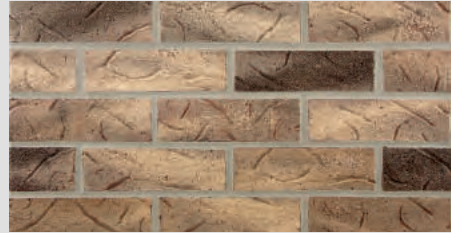


Manganese Ironspot

FACE BRICK RESIDENTIAL SERIES



Buckskin Sands



Adobe Sands



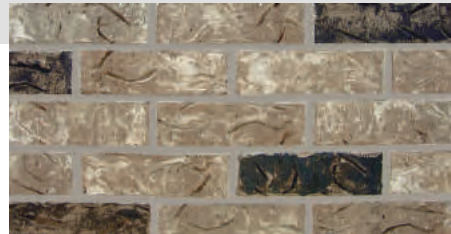
Grey Sands



Antique 752



Tuscan Grey



Grey Heritage with Black



Copper Sands



Sahara Sands

FACE BRICK RESIDENTIAL SERIES CONTINUED



Desert Sands



Orleans Sands



Red Heritage with Black



Burgundy Sands



Autumn Sands



Merlot Sands



Heritage #46



Heritage #46 No Yellow

FACE BRICK JEFFERSON SERIES



Rushmore



Continental



Monticello



Liberty



Patriot



Yale University Health Center

Color: Manganese Ironspot

Texture: Smooth

Size: Solid Modular, Bullet Shape

Location: New Haven, CT



FACE BRICK TEXTURES



Smooth



Velour



Matt



Velvetex



Vertical Score



Artisan

FACE BRICK TEXTURES CONTINUED



Danish Hand Mould

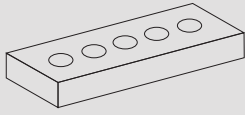


Heritage

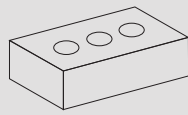


Antique

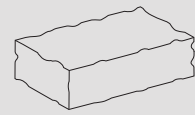
FACE BRICK SIZES



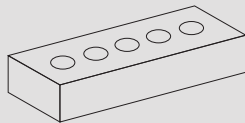
Roman
3-5/8" x 1-5/8" x 11-5/8"



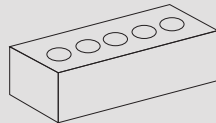
Modular
3-5/8" x 2-1/4" x 7-5/8"



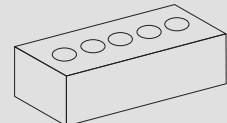
Danish Hand Mould
3-5/8" x 2-1/4" x 7-5/8"



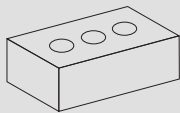
Norman
3-5/8" x 2-1/4" x 11-5/8"



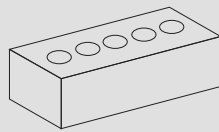
Slim Kingsize
2-5/8" x 2-5/8" x 9-5/8"



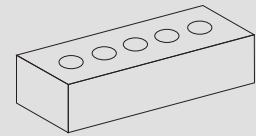
Kingsize
3" x 2-5/8" x 9-5/8"



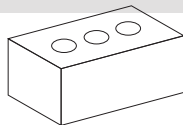
Engineer Modular
3-5/8" x 2-13/16" x 7-5/8"



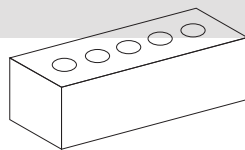
Engineer Kingsize
3" x 2-13/16" x 9-5/8"



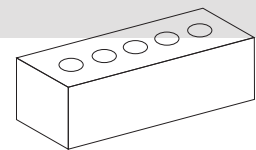
Norwegian
3-5/8" x 2-13/16" x 11-5/8"



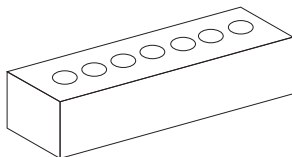
Closure
3-5/8" x 3-5/8" x 7-5/8"



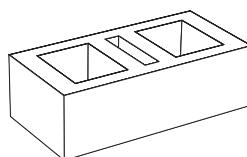
3" Utility
3" x 3-5/8" x 11-5/8"



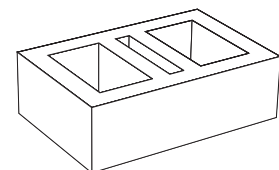
Utility
3-5/8" x 3-5/8" x 11-5/8"



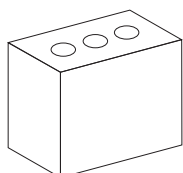
Meridian
3-5/8" x 3-5/8" x 15-5/8"



6" Thru the Wall
5-5/8" x 3-5/8" x 11-5/8"



8" Thru the Wall
7-5/8" x 3-5/8" x 11-5/8"



Triple Brick
3-5/8" x 7-5/8" x 7-5/8"



Kennesaw State University, Marietta

Color: Medium Ironspot #77

Texture: Velour

Size: Modular

Location: Marietta, GA



THIN BRICK



Normandale Community College Parking Ramp

Color: Desert Ironspot Dark, Medium Ironspot #46, Dark Ironspot, Executive Ironspot

Texture: Smooth

Size: Norman

Location: Bloomington, MN



Keyback Design

To enhance in-place installation, Endicott thin brick feature a keyback design, which provides a mechanical lock into the concrete for maximum durability and permanence.

It also provides advantages of increased shear values and pull-out strengths.





SWFA
OUTDOORS

SWFA
OUTDOORS

5840

FIRE LANE

SWFA Outdoors

Color: Desert Ironspot Dark, Executive Ironspot, Golden Buff, Manganese Ironspot, Coppertone

Texture: Smooth, Velour

Size: Modular

Location: Midlothian, TX



THIN BRICK COLORS



Ivory Blend



Golden Buff



Light Grey Blend



Grey Blend



Light Sandstone



Dark Sandstone



Buff Blend



Rose Blend



Red Blend



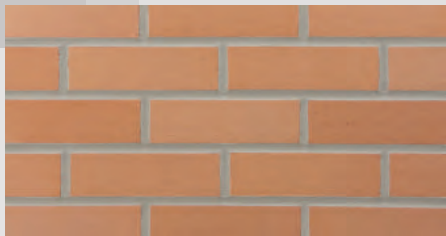
Burgundy Blend



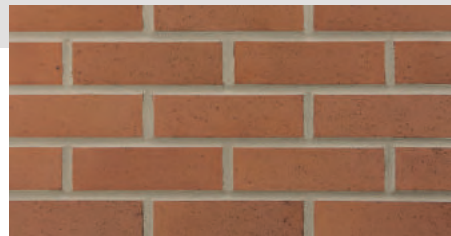
Ruby Red



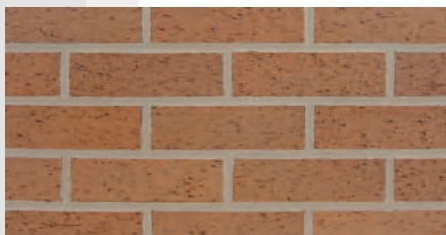
Red Ironspot



Desert Ironspot Light



Desert Ironspot Dark



Coppertone



Copper Canyon

THIN BRICK COLORS CONTINUED



Bordeaux Blend



Manganese Brown



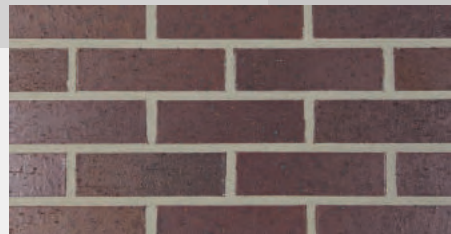
Executive Ironspot



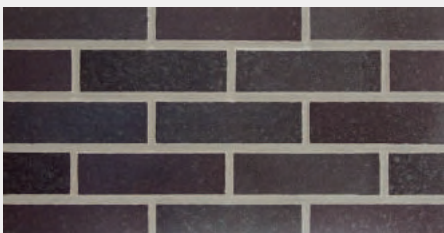
Sienna Ironspot



Medium Ironspot #77



Medium Ironspot #46



Dark Ironspot



Manganese Ironspot



Grey Sands



Desert Sands



Burgundy Sands



Merlot Sands



Autumn Sands



Sahara Sands



Orleans Sands

THIN BRICK JEFFERSON SERIES



Rushmore



Continental



Monticello



Liberty



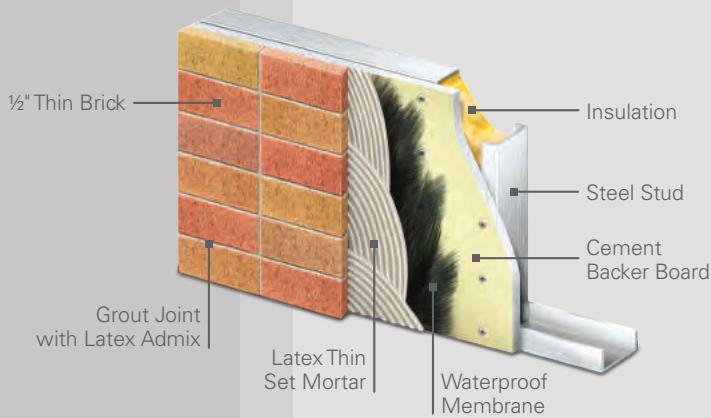
Patriot

THIN BRICK APPLICATIONS

Below, you'll see some of the more common application processes for thin brick.

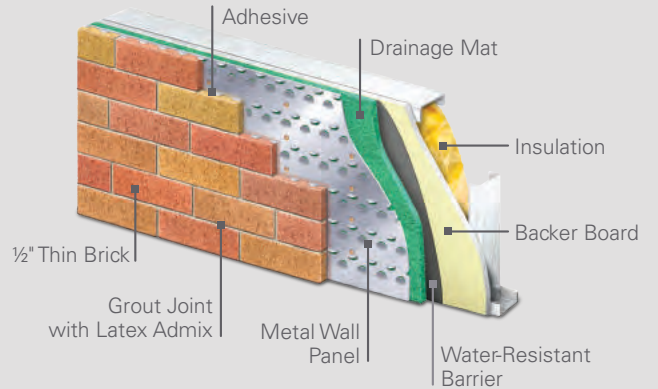
PANEL SYSTEM

Pre-Fabricated or On-Site Panelization



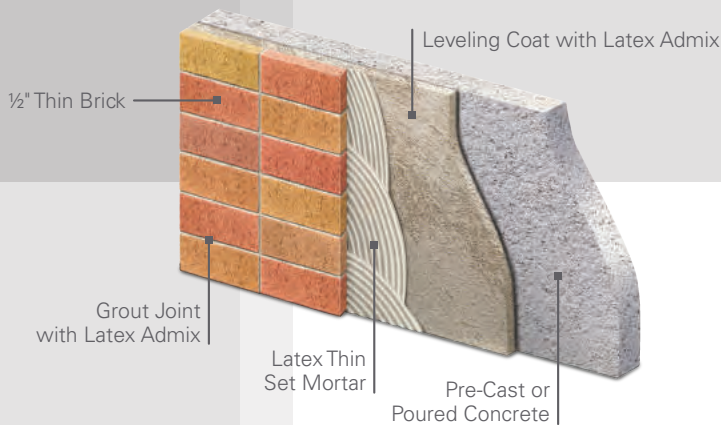
METAL PANEL WALL SYSTEM

Pre-Fabricated or On-Site Panelization



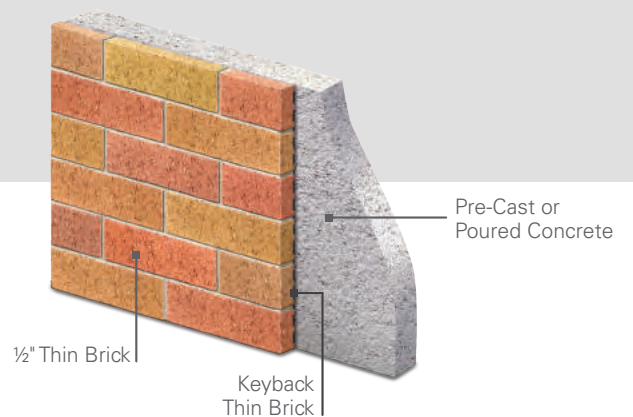
THIN BED SYSTEM WITH LEVELING COAT

Job Applied Over Pre-Cast or Poured in Place Concrete



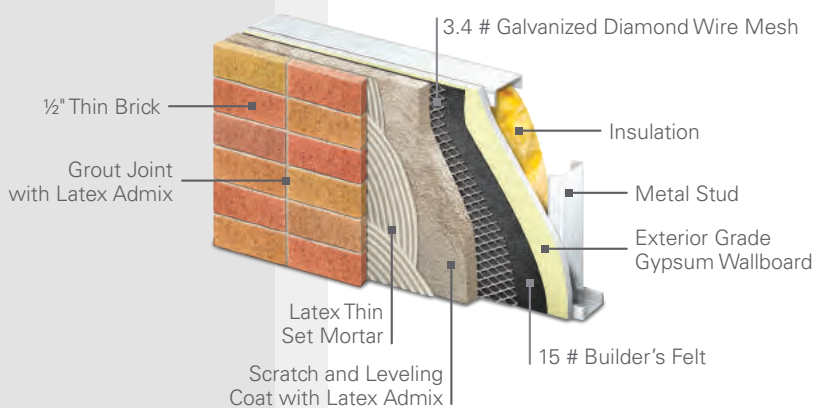
THIN BRICK SYSTEM

Embedded in Precast Concrete



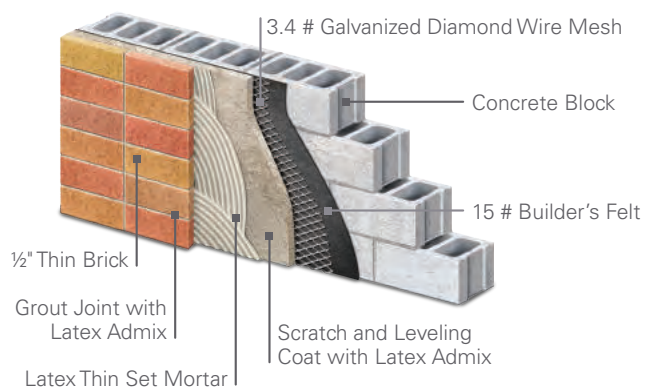
MORTAR BED SYSTEM

Pre-Fabricated or On-Site Panelization



MORTAR BED SYSTEM

Concrete Block Infill Wall or Existing Masonry



THIN BRICK TEXTURES



Smooth



Velour



Matt



Vertical Score



Artisan



Danish Hand Mould

THIN BRICK TEXTURES CONTINUED

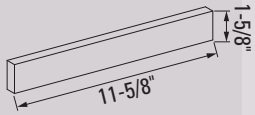


Heritage

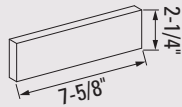


Square Edge No Texture

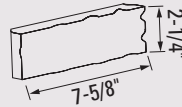
THIN BRICK SIZES



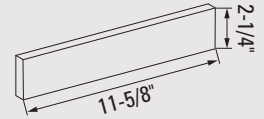
Roman



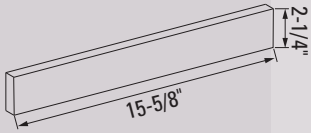
Modular



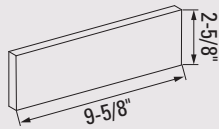
Danish Hand Mould



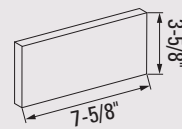
Norman



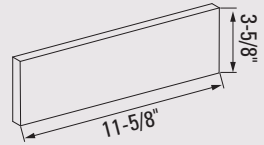
2-1/4" Meridian



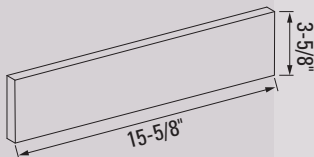
Kingsize



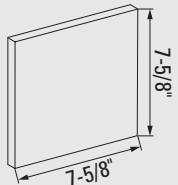
Closure



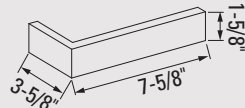
Utility



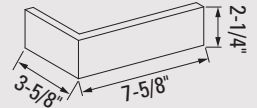
3-5/8" Meridian



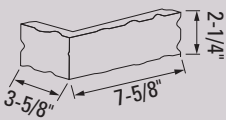
Triple



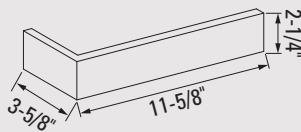
BC1-5/8" 48



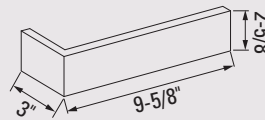
BC2-1/4" 48



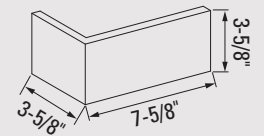
BC2-1/4" 48
Danish Hand Mould



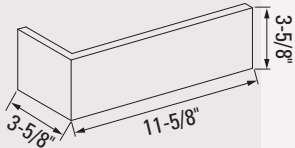
BC2-1/4" 412



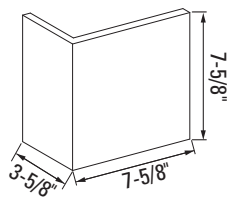
BC2-5/8" 310



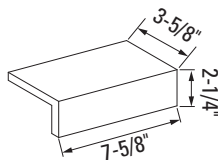
BC448



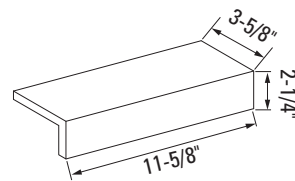
BC4412



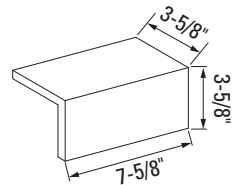
BC848



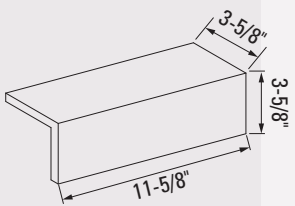
Edge Cap A



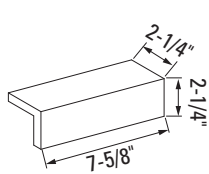
Edge Cap B



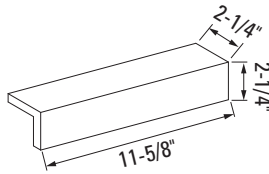
Edge Cap C



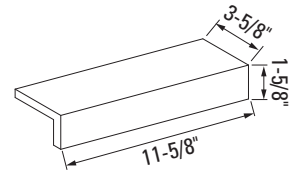
Edge Cap D



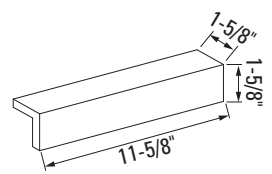
Edge Cap E



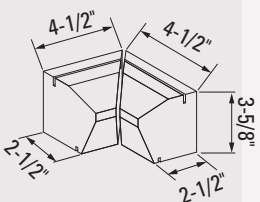
Edge Cap F



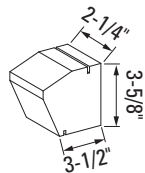
Edge Cap G



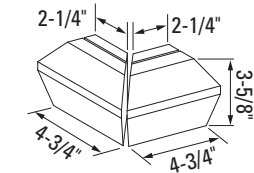
Edge Cap H



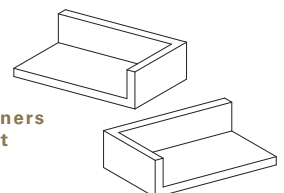
Rolok Sill Internal Corner



Rolok Sill



Rolok Sill External Corner



Edge Cap Corners
Left and Right

Note:
Edge Cap—Three Sided L/R dimensions are the same as the Edge Caps shown.



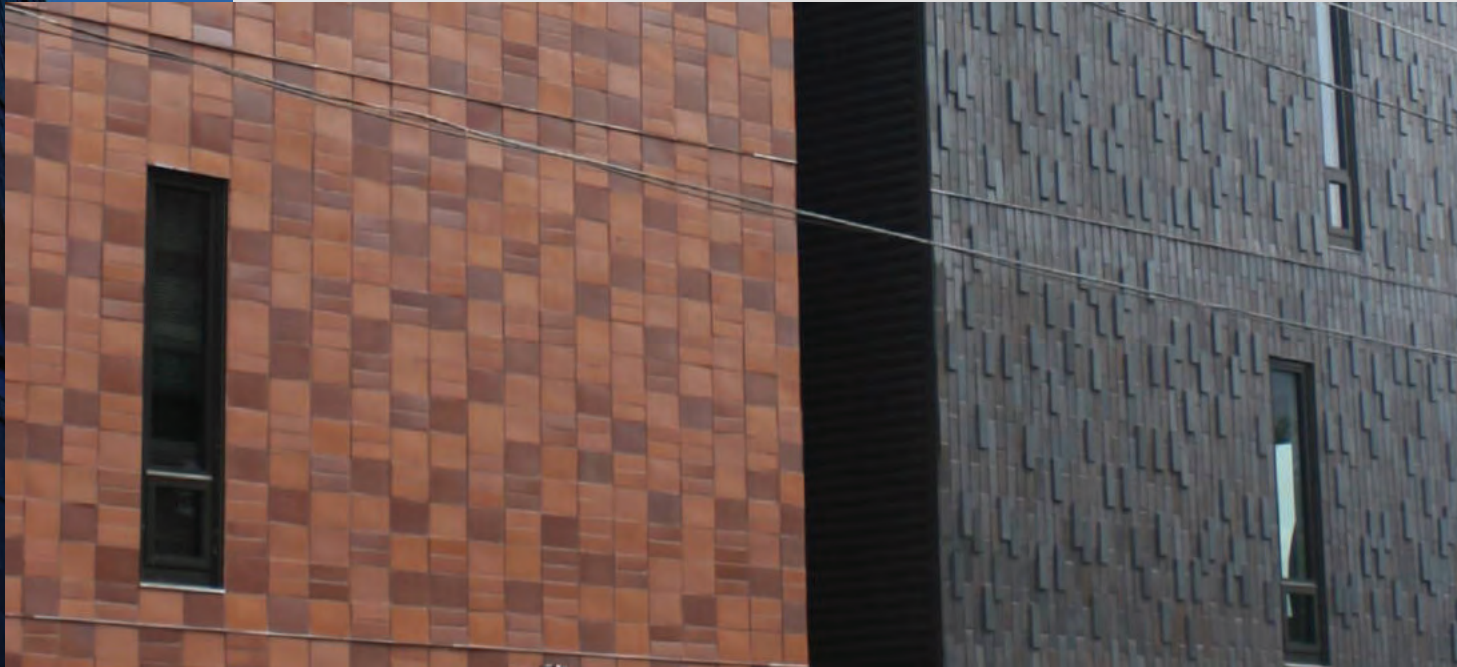
The Uncommon

Color: Copper Canyon, Medium Ironspot #77, Manganese Ironspot, Dark Ironspot, Sienna Ironspot

Texture: Smooth, Velour

Size: Utility, Shapes

Location: Charlottesville, VA



PAVERS





CITADEL OUTLET MALLS

Color: Medium Ironspot #46, Desert Ironspot Dark, Desert Ironspot Light, Medium Ironspot #77, Bordeaux Blend

Texture: Wirecut

Size: 4" x 8"

Location: Los Angeles, CA



PAVER COLORS



Rose Blend



Red Blend



Burgundy Blend



Bordeaux Blend



Coppertone



Copper Canyon



Medium Ironspot #77



Medium Ironspot #46



Dark Ironspot



Manganese Ironspot

Texture is wirecut for pavers and paver treads and smooth for pool coping.



BARTLEY HALL

VILLANOVA
School of Business

VILLANOVA UNIVERSITY LANDSCAPE

Color: Dark Ironspot, Medium Ironspot #46, Manganese Ironspot, Medium Ironspot #77, Bordeaux Blend

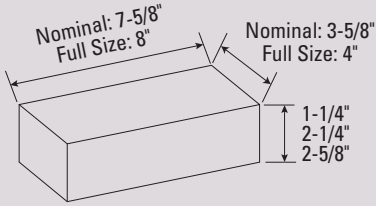
Texture: Wirecut

Size: 2-5/8" x 4" x 8" Rel/Lug, 2-5/8" x 4" x 8" Permeable

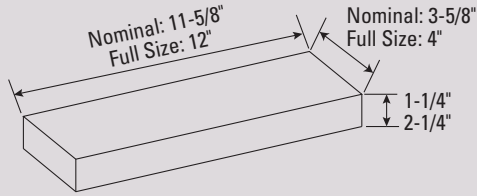
Location: Villanova, PA



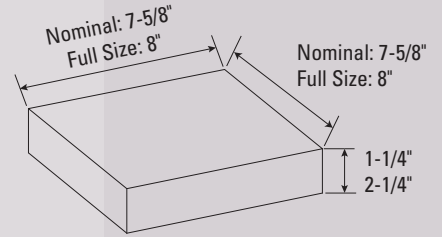
PAVER SIZES



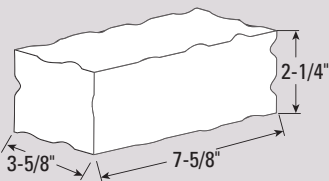
4" x 8" Paver



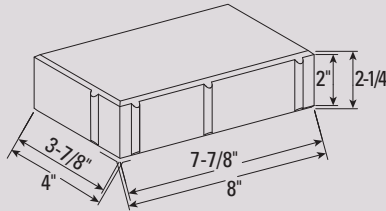
4" x 12" Paver



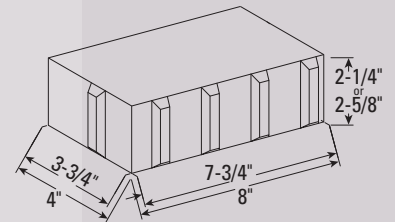
8" x 8" Paver



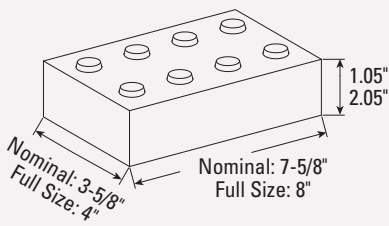
Danish Hand Mould



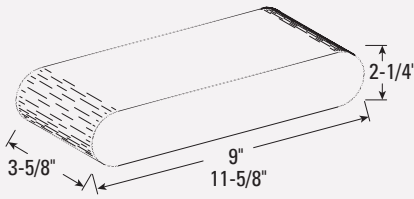
Relieved Edged Lugged Paver



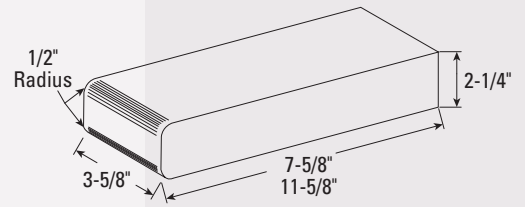
4" x 8" Permeable Paver



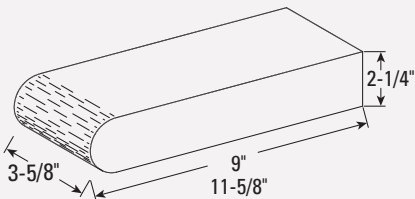
ADA Handicap Detectable
Warning Paver



Pool Coping
Double Bullnose

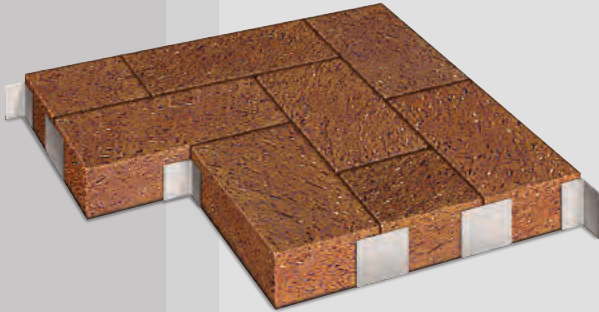


Paver Tread



Pool Coping

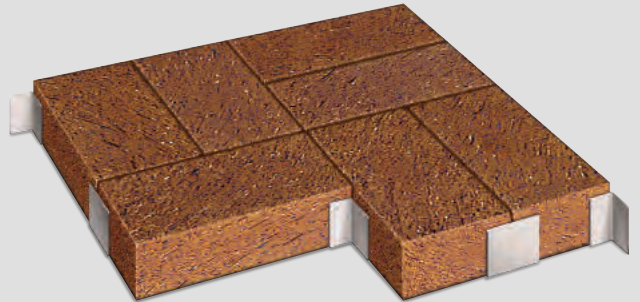
PAVER SPACERS



Paver Spacers used in a Herringbone application



Paver Spacers used in a Running Bond application



Paver Spacers used in a Basketweave application

ELIMINATING CHIPPAGE

In segmental paving applications, chippage often occurs when pavers move against each other due to improper installation techniques. Endicott paver spacers, however, eliminate this issue. They create and ensure the needed spacing between units to accommodate jointing sand while providing the crisp appearance of square edge pavers.

ESTIMATING DATA

Herringbone Pattern

10 'T' Spacers/sq. ft.

Running Bond Pattern

10 'T' Spacers/sq. ft.

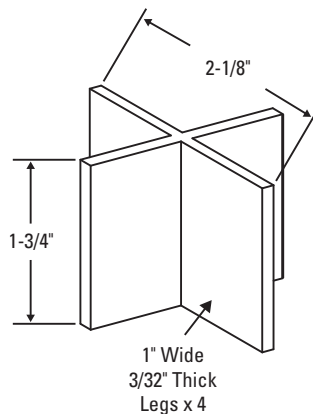
Basketweave Pattern

7.5 'T' Spacers/sq. ft.

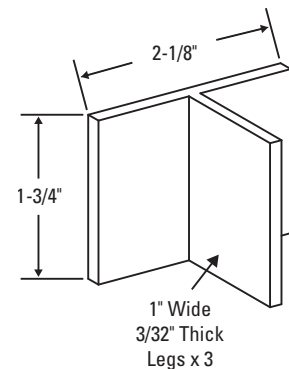
1.5 '+' Spacers/sq. ft.

NOTE:

Above sq. ft. quantities include perimeter spacers.



Paver Spacer—Cross



Paver Spacer—Tee



CHARLES E. LAK

HUMAN SERVICES CAMPUS



CHARLES E. LAKIN HUMAN SERVICES CAMPUS

Color: Burgundy Blend, Manganese Ironspot, Red Blend, Medium Ironspot #77, Desert Ironspot Dark

Size: 2-5/8" x 4" x 8" Lugged

Texture: Wirecut

Location: Council Bluffs, IA







HARLEY AVENUE STREETScape

Color: Medium Ironspot #46, Manganese Ironspot, Medium Ironspot #77

Texture: Wirecut

Size: 2-5/8" x 4" x 8" Relieved Edge Lugged, 2-1/4" x 4" x 8" ADA

Location: Fort Worth, TX



PRIVATE RESIDENCE

Color: Medium Ironspot #46

Texture: Wirecut

Size: 2-1/4" x 4" x 8", Paver Step Tread

Location: Las Vegas, NV



PRIVATE RESIDENCE

Color: Dark Ironspot

Texture: Smooth

Size: Pool Coping

Location: Memphis, TN

MURALS



EAGLE

Color: Medium Ironspot #46

Location: Endicott, NE



ST. PAUL'S LUTHERAN CHURCH

Color: Medium Ironspot #77

Location: Utica, NE



DUNDEE PARK

Color: Red Blend

Location: Omaha, NE

In 1920, rich mineral deposits were discovered in Jefferson County, Nebraska. These rich minerals form the clay that gives Endicott's product collection its natural beauty and unmatched color palette. Across North America, Endicott's collection of face brick, thin brick, pavers, tile and special shapes are setting the solid world in motion.

For other literature, samples and the name of your nearest distributor, contact Endicott today.



Endicott Clay Products Company
P.O. Box 17
Fairbury, Nebraska USA 68352
402-729-3315 FAX: 402-729-5804

Endicott Thin Brick & Tile, LLC
P.O. Box 645
Fairbury, Nebraska USA 68352
402-729-3323 FAX: 402-729-5804

endicott.com

Bruce C. Bolling Municipal Building
Color: Medium Ironspot #46
Texture: Smooth, Velour, Artisan
Size: Modular, Shapes
Location: Boston, MA